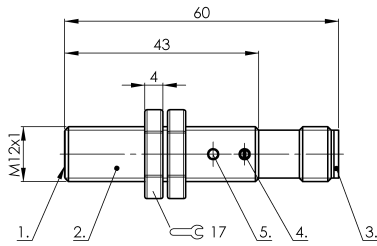
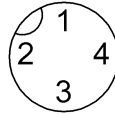


SK1-4-M12-NBO-VA/PTFE-Y2

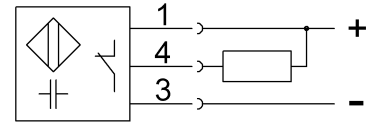
CS00AC



Connector view



Wiring Diagram



1) Sensing surface 2) Housing 3) Cover 4) Potentiometer 5) LED function indicator



### Electrical connection

Connection	M12x1-Connector, 4-pole, A-coded
Polarity reversal protected	yes
Short-circuit protection	yes

### Electrical data

Hysteresis H max. (% of Sr)	15.0 %
MTTF (40 °C)	584 a
Operating voltage $U_b$	12...35 VDC
Protected against miswiring	yes
Rated insulation voltage $U_i$	75 V DC
Rated operating current $I_e$ DC	200 mA
Repeat accuracy max. (% of Sr)	2.0 %
Switching frequency	100 Hz
Utilization category	DC -13
Voltage drop static max.	1.5 V

### Environmental conditions

Ambient temperature	-30...70 °C
Protection type IEC 60529	IP65

### Functional safety

Diagnostic coverage	0 %
Functional safety	no

### General data

Approval/Conformity	CE cULus
---------------------	-------------

Basic standard  
Scope of delivery  
Sensitivity

IEC 60947-5-2  
Nut (2x)  
Switching distance adjustable

### Material

Cover material	PA
Housing material	Stainless steel (1.4301)
Material cover	PA
Material sensing surface	PTFE

### Mechanical data

Dimension	undefined
Installation	for flush mounting
Size	M12x1
Tightening torque	40 Nm

### Output/Interface

Switching output	NPN Normally closed (NC)
------------------	--------------------------

### Range/Distance

Measuring range	1...4 mm
Range	1...4 mm
Rated operating distance $S_n$	4 mm
Ripple max. (% of $U_e$ )	10 %
Temperature drift max. (% of Sr)	20 %

For further information on MTTF/B10d, please refer to the MTTF / B10d Certificate.

Specification of the MTTF value and the B10d value do not represent any binding quality and/or life expectancy guarantees.