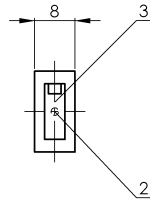
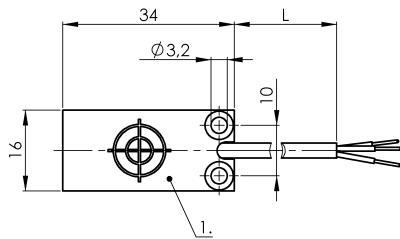
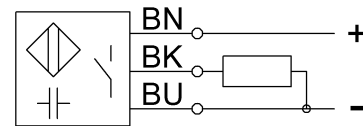


# SK1-FSA-34/16/8-PBS-PP CS008H



## Wiring Diagram



1) Sensing surface 2) Potentiometer 3) LED function indicator



## Electrical connection

Cable length	2 m
Conductor cross-section	0.14 mm <sup>2</sup>
Connection type	Cable, 2.00 m, PUR
Number of conductors	3
Polarity reversal protected	yes
Short-circuit protection	yes

## Electrical data

MTTF (40 °C)	462 a
Operating voltage $U_b$	12...30 VDC
Protected against miswiring	yes
Rated insulation voltage $U_i$	75 V DC
Rated operating current $I_e$ DC	50 mA
Ready delay $t_v$ max.	100 ms
Repeat accuracy max. (% of $S_r$ )	5.0 %
Residual current $I_r$ max.	10 $\mu$ A
Switching frequency	2 Hz
Utilization category	DC-13
Voltage drop static max.	1.5 V

## Environmental conditions

Ambient temperature	-30...70 °C
Protection type IEC 60529	IP67

## Functional safety

Diagnostic coverage	0 %
Functional safety	no

## General data

Approval/Conformity	CE cULus
Basic standard	IEC 60947-5-2
Sensitivity	media-dependent, adjustable
Series	Level sensor

## Material

Cover material	PP
Housing material	PP
Material cover	PP
Material jacket	PUR
Material sensing surface	PP

## Mechanical data

Dimension	undefined
Installation	flush with container outer wall

## Output/Interface

Switching output	PNP Normally open (NO)
------------------	------------------------

## Range/Distance

Ripple max. (% of $U_e$ )	10 %
---------------------------	------

## Remarks

Note for using in standard applications with aqueous media: The Smart Level sensors are factory adjusted for standard applications. With this setting the Smart Level sensors can be used without further adjustment for detecting aqueous media through glass or plastic walls. The factory setting can