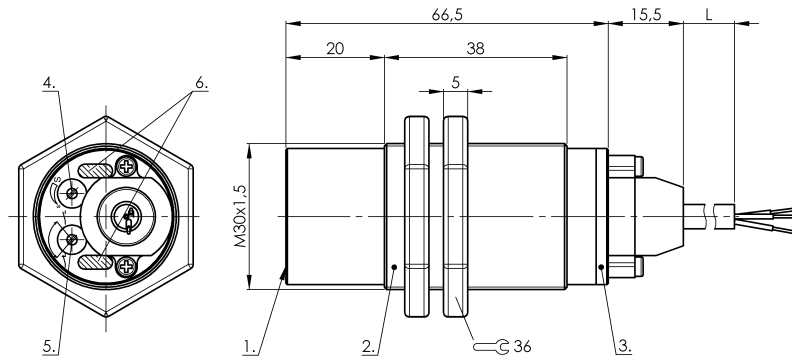
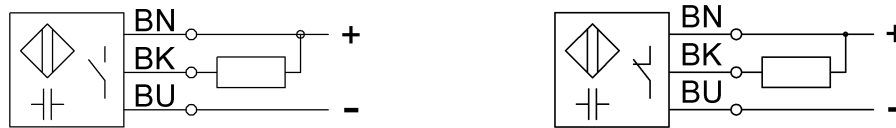


SK1-FSA-M30-NNBX-PBT

Ordercode: CS007W



Wiring Diagram



1) Sensing surface 2) Housing 3) Cover 4) Potentiometer 5) NO or NC selectable 6) LED function indicator



IND. CONT. EQ.
81U2
for use in the secondary of
a class 2 source of supply

Display/Operation

| | |
|--------------------|-----|
| Function indicator | yes |
| Power indicator | yes |

Electrical connection

| | |
|-----------------------------|----------------------|
| Cable length | 2 m |
| Conductor cross-section | 0.34 mm ² |
| Connection type | Cable, 2.00 m, PUR |
| Number of conductors | 3 |
| Polarity reversal protected | yes |
| Short-circuit protection | yes |

Electrical data

| | |
|---|-------------|
| MTTF (40 °C) | 221 a |
| Operating voltage U _b | 10...35 VDC |
| Protected against miswiring | yes |
| Rated insulation voltage U _i | 75 V DC |
| Rated operating current I _e DC | 300 mA |
| Switching frequency | 2 Hz |
| Utilization category | DC-13 |
| Voltage drop static max. | 1.8 V |

Environmental conditions

| | |
|---------------------------|-------------------------|
| Ambient temperature | -10...60 °C |
| Protection type IEC 60529 | IP67 IP64 at cable exit |

Functional safety

| | |
|---------------------|-----|
| Diagnostic coverage | 0 % |
| Functional safety | no |

General data

| | |
|---------------------|-----------------------------|
| Approval/Conformity | CE cULus |
| Basic standard | IEC 60947-5-2 |
| Scope of delivery | Nut (2x) |
| Sensitivity | media-dependent, adjustable |
| Series | Level sensor |

Material

| | |
|--------------------------|-----------|
| Cover material | PBT PE |
| Housing material | PBT |
| Material cover | PBTPE |
| Material jacket | PUR |
| Material sensing surface | PBT |

Mechanical data

| | |
|-------------------|-----------|
| Dimension | undefined |
| Installation | non-flush |
| Size | M30x1.5 |
| Tightening torque | 4 Nm |

Output/Interface

| | |
|------------------|---|
| Switching output | NPN Normally open/Normally closed (NO/NC) |
|------------------|---|

Range/Distance

| | |
|------------------------------------|------|
| Ripple max. (% of U _e) | 10 % |
|------------------------------------|------|